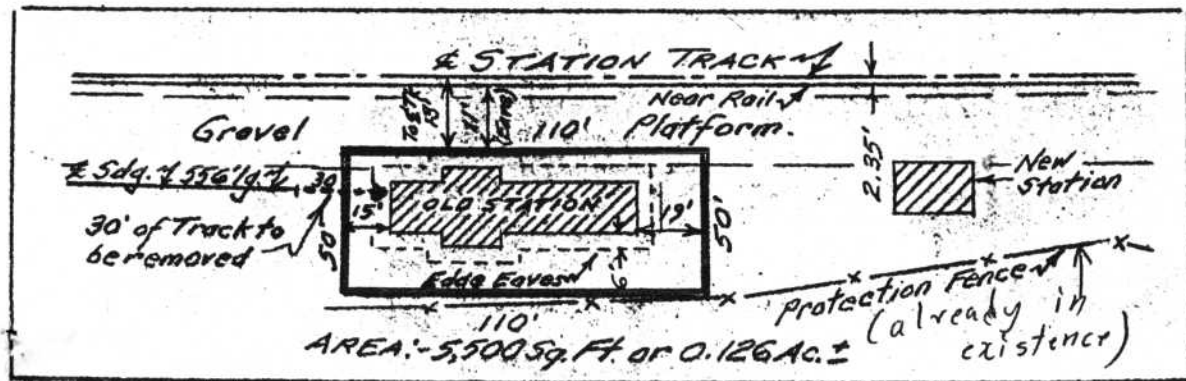
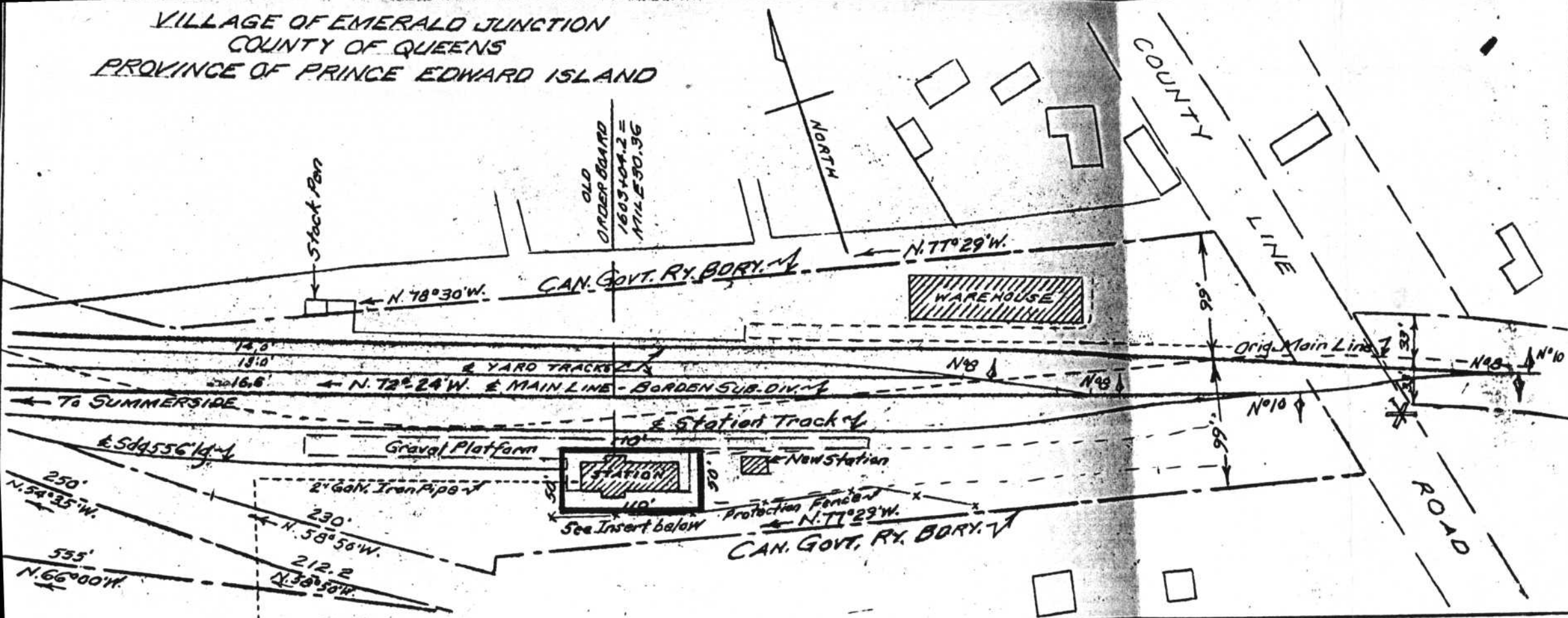


VILLAGE OF EMERALD JUNCTION  
 COUNTY OF QUEENS  
 PROVINCE OF PRINCE EDWARD ISLAND



INSERT  
 Not to Scale

**CN** CANADIAN NATIONAL RAILWAYS  
 ATLANTIC REGION  
 CANADIAN GOVERNMENT RAILWAYS  
 BORDEN SUBDIVISION — MILE 30.36

EMERALD JUNCTION, P.E.I.  
 PLAN TO ACCOMPANY LEASE OF OLD STATION AND LAND FROM HER MAJESTY THE QUEEN TO EMERALD RECREATION CLUB FOR RAILWAY ARTIFACTS, CRAFTS AND RECREATION FACILITIES.  
 AREA: 5,500<sup>±</sup> or 0.126 Ac. ±

REGIONAL ENGINEER'S OFFICE  
 MONCTON, N.B.  
 DATE: DEC 11<sup>th</sup>, 1980  
 SCALE: 1 INCH = 100 FEET  
 MADE BY: [Signature]

R. E. Inyord  
 REGIONAL ENGINEER TECHNICAL SERVICES  
 CORR. FILE NO. 1920-E-4  
 PLAN NO. 31333